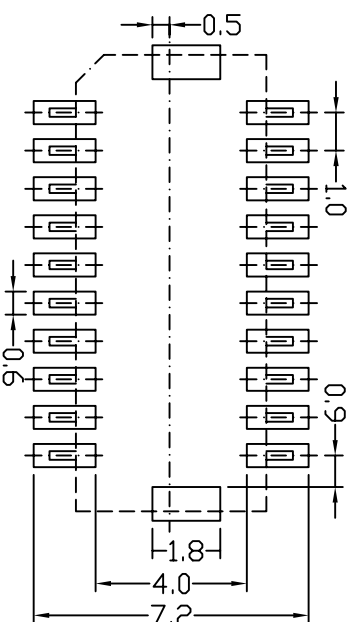
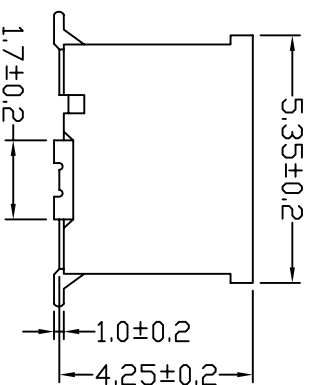
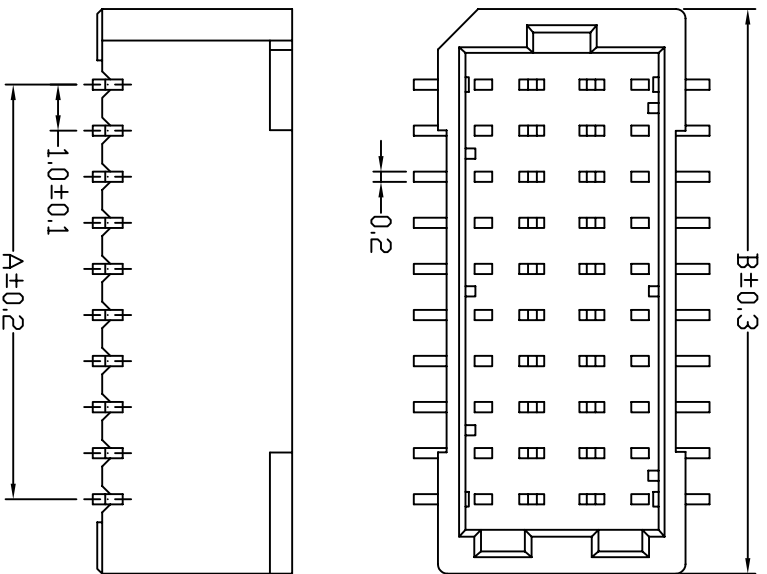


NO.	REV.	MODIFY NOTES	REVISED	DATE
1	A	L070506	MIKE	07.05.06
2	B			



P.C.B Layout

SPECIFICATIONS

- Voltage Rating : 50V AC/DC
- Current Rating : 1A AC/DC
- Withstanding Voltage : 500V AC/minute
- Insulation Resistance : 100MΩ min
- Temperature Range : - 25°C to + 85°C
- Contact Resistance : 20mΩ max

WAFER

Part No. : A1001WVS-2xXX
Poles : 12, 16, 20, 30, 40, 50
Material :
Insulator::PA46 UL94V-0
Contact:Phosphor Bronze,Gold Plated
Solder Tab:Bronze,Tin Plated

Poles	Part No	Dimensions (mm)	
		A	B
12	A1001WVS-2*06	5.00	8.30
16	A1001WVS-2*08	7.00	10.30
20	A1001WVS-2*10	9.00	12.30
30	A1001WVS-2*15	14.00	17.30
40	A1001WVS-2*20	19.00	22.30
50	A1001WVS-2*25	24.00	27.30

SIGNATURE

DATE

MIKE

07.05.06

DR N.
CH K.
APP.

TOLERANCE:

X. ±XXX

.X ±0.20

.XX ±0.10

ANG.

Skysuktronics Industrial Co.,Ltd.

PRODUCT NAME 1.0mm Wafer V/A SMT

PRODUCT CODE A1001WVS-2xXX

CODE NO. LS00

CUS. NO.

SCALE None

UNIT mm

PAGE 1/1

Perspective